

Schaffhausen, 18 November 2025

# **Exchange on GHG emissions, Scope 3**

Anna Oetinger, Group Sustainability

# Agenda

- 01** GF at a glance
- 02** Our journey
- 03** Scope 3 measures and GHG emissions



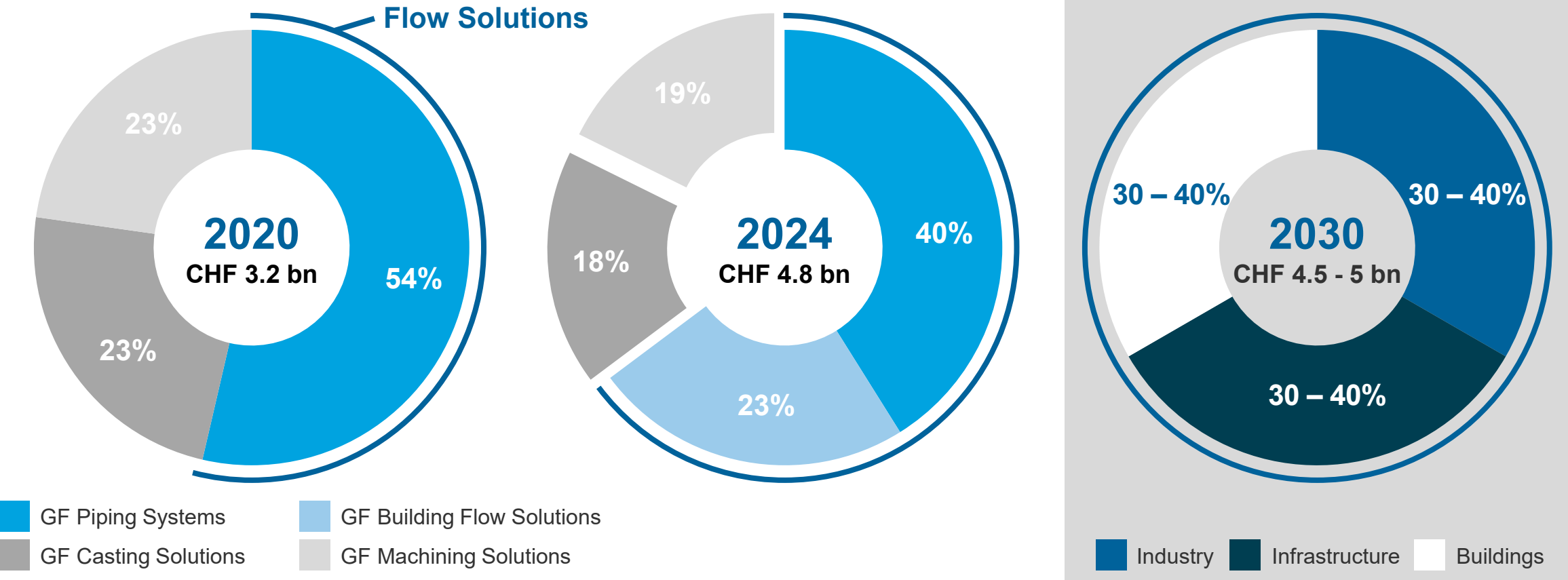


A woman in a white shirt and blue skirt is walking through a large industrial facility. The facility is filled with rows of white pipes and orange components, likely part of a water treatment or industrial process. The woman is looking up at the equipment. The text "GF at a glance" is overlaid on the image.

# GF at a glance

# GF's transformation to become the Flow Solutions leader

Sales per division pro-forma



# GF's sustainable solutions directly address attractive long-term growth trends



## Climate change and NRW

Disrupted water cycles lead to more droughts, floods and unpredictable weather

- ▶ Seamless solutions for aging water infrastructure and storage of water



## Rapid urbanization

Higher demands for housing and infrastructure in urban areas

- ▶ Reliable and efficient distribution of water and energy



## Energy efficiency in buildings

Indoor climate as major driver for energy consumption in buildings

- ▶ Reliable and efficient heating and cooling solutions



## Industrial innovations

Rapid development of strategic industries increases industrial water consumption

- ▶ Mission-critical fluid handling solutions

NRW = Non-revenue water



A photograph of three business professionals (two men and one woman) sitting at a green outdoor table, engaged in a conversation. The man on the left is bald with a beard, wearing a dark suit and light blue shirt. The woman in the middle has short dark hair, wearing a black blazer over a light pink top. The man on the right has long brown hair tied back, wearing a light blue button-down shirt and khaki pants. They are outdoors with a modern building and greenery in the background. A semi-transparent white banner with the text 'Our journey' is overlaid across the middle of the image. On the table, there is a blue insulated water bottle and a blue mug with the '+GF+' logo.

# Our journey





**+ Sustainability**  
– is this more than  
planting trees at our  
facilities?

# Yes! Sustainability for GF is:



**Business  
opportunities**

1



**Environmental and  
social cautious production**

2



**Embracing diverse aspects  
and thoughts in our team**

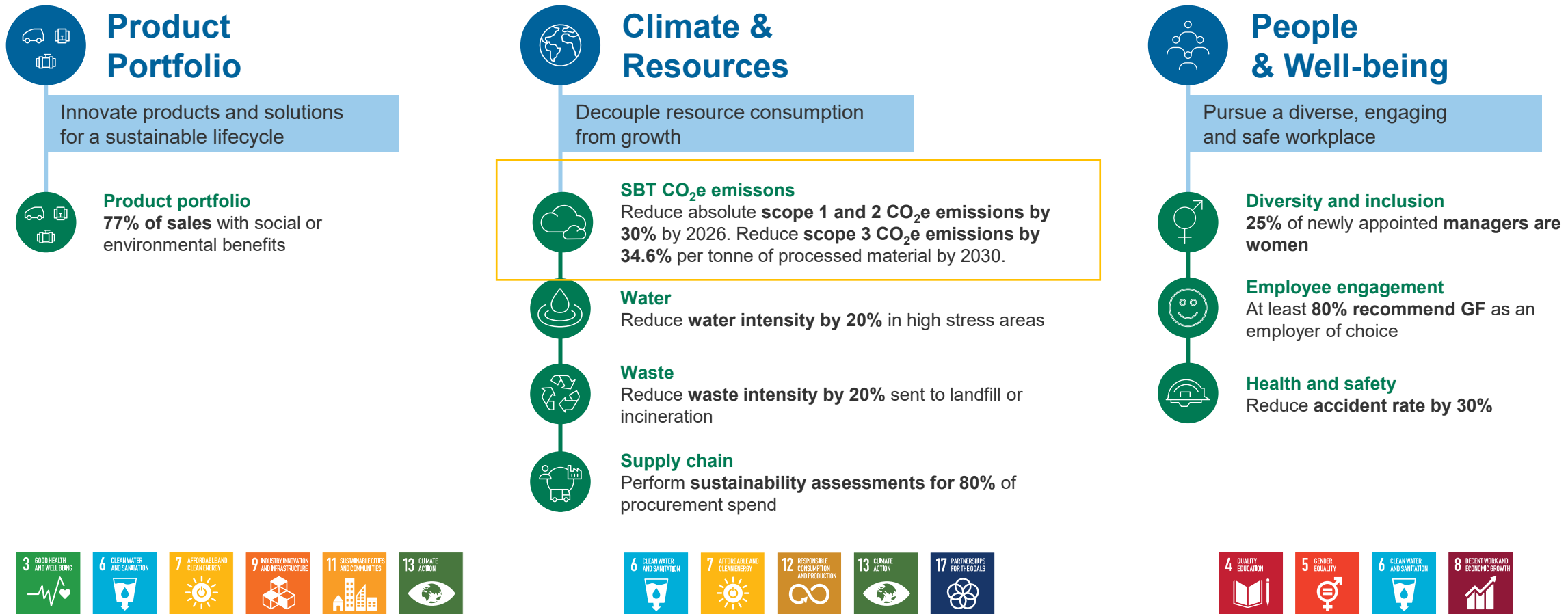
3





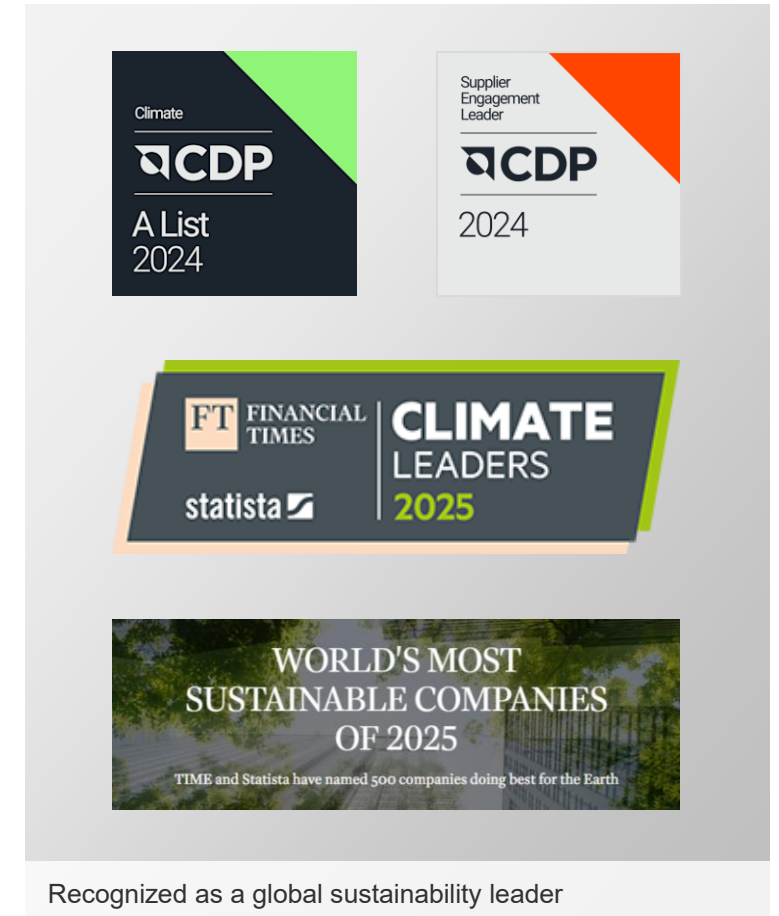
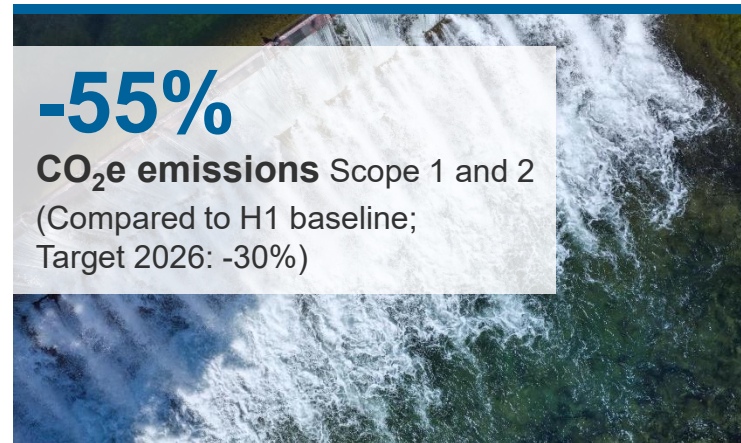
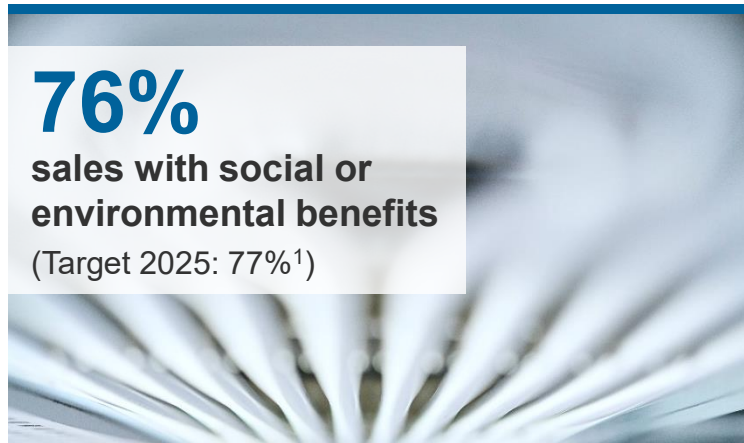


# Our 2025 sustainability objectives are ambitious





# Sustainability Continues to anchor GF's Long-Term Strategy



<sup>1</sup> The target values have been revised to include only GF's Flow Solutions business





# Scope 3 measures and GHG emissions



# ...and reflected in GF's Science Based Targets (SBT)



## Scopes of emissions

The SBTi framework uses the reporting standards established by the Greenhouse Gas Protocol, which divides greenhouse gas emissions into scopes:



### Scope 1

Direct emissions, typically from the burning of fuels, from owned or controlled sources, including our facilities and company vehicles

### Scope 2

Indirect emissions from the generation of purchased electricity, steam, heat or cooling.

### Scope 3

Indirect emissions (not included in scope 2) that occur in our value chain, including all our subcontracted services.

**30%**

absolute reduction by 2026

**34.6%**

Intensity reduction by 2030

Net-zero target submission  
2050 in progress

# Leading the decarbonization of the industry towards Net Zero by focusing on four strategic pillars

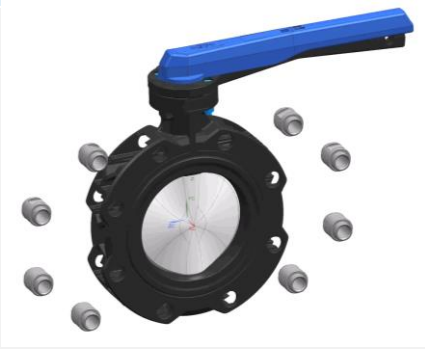
- **SBT validated reduction targets** since 2022 ✓
- **Net Zero commitment by 2050** since 2024 ✓
- **Net Zero journey** focusing on four strategic pillars:
  - Renewable energy in our operations
  - Energy efficiency in our operations
  - Low carbon material for our products





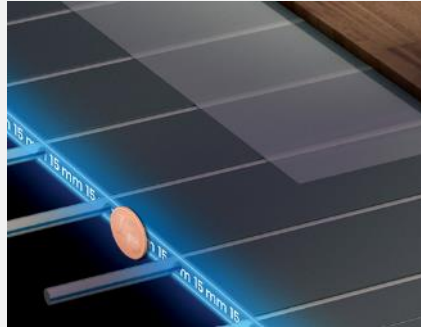
# Recent innovations accelerate sustainable product portfolio

## Design for disassembly



- Lug Style Butterfly valve designed for disassembly
- No compromise in stability and performance

## Sustainable renovation



- Siccus mini provides underfloor heating and cooling
- Highly efficient heating and cooling
- Easily to install for parquet and laminate

## Raw material



- Bio- attributed material to reduce Scope 3.1 emissions
- No compromise in quality and material quality

## EPDs, LCAs

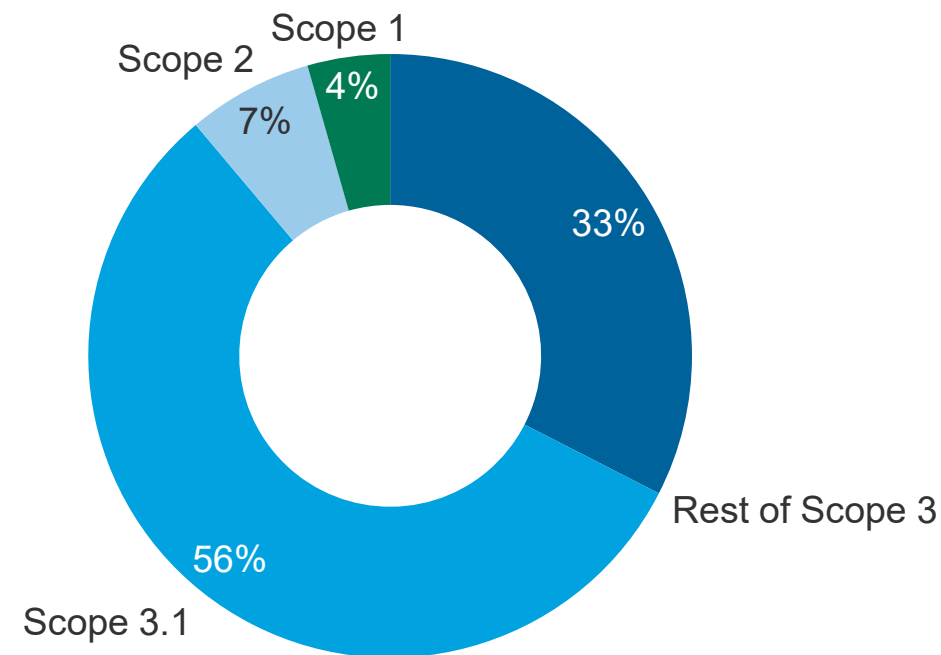


- Product related sustainability data
- Improve the sustainability footprint of our customers

# Collaboration with supply chain is key towards Net Zero

- **Majority of GF's emissions from supply chain**
  - Supplier data drive Scope 3.1. emissions
  - Scope 3.1 reduction mainly focuses on suppliers
- **Data availability contributes to competitive advantage**
  - Net Zero targets only achievable if supply chain contributes to emission reductions
  - Public tenders and regulations tackle Scope 3 emissions.

**GHG emissions per Scope 2024, in %**



# Thank you





# Disclaimer

This document is for presentation purposes only and should not be construed as an offer, invitation or solicitation to subscribe for, purchase or sell any investment. Neither it nor anything it contains shall form the basis of any contract whatsoever.

Opinions expressed herein reflect the current judgement of the management of GF. The presentation contains forward-looking statements that involve risks and uncertainties. The actual results of GF may differ materially from those anticipated in these forward-looking statements and forecasts as a result of a number of factors.

The management of GF does not accept any liability whatsoever with respect to the use of this presentation.